

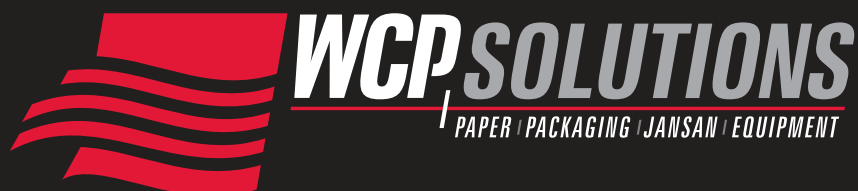
COVID19 PRODUCT GUIDE

A comprehensive product list to help re-open your business



WCP Solutions has been in business for over 90 years, providing products and services to help our customers efficiently and successfully run their businesses. The COVID-19 pandemic has presented a whole new set of expectations from consumers and our community members alike.

We are here for you and ask to be your supplier for **ALL** the things you need to meet the evolving business and safety demands.



COVID19 PRODUCT GUIDE

A comprehensive product list to help re-open your business



Updated: May 22, 2020

CLEANING & DISINFECTING

SUPPLYWAYS QUAT DISINFECTANT

Broad spectrum disinfectant cleans and disinfects in one step, great choice for daily cleaning in areas where disinfection is a must.



SW001221

SUPPLYWAYS CHEMICAL DISPENSER

Hand-held dispenser. Use with 2 liter Supplyways dilution control chemicals.



SW001439

CLOROX CLEANUP + BLEACH

Disinfects and kills 99.9% of common household bacteria in only 30 seconds. Kills viruses that cause colds and flu.



CL031221

BETCO PINE QUAT

This neutral pH disinfectant, cleans and deodorizes without leaving a film or dulling surfaces.



BE30404

BRULIN PERFORMEX® RTU

One-Step Disinfectant Cleaner

- 5 Minute Disinfection
- Virucidal Efficacy
- Effective Against Known and Emerging Pathogens
- Neutral pH



BRL161051Q6

USC DISINFECTANT CLEANER - RTU

Designed for use in hospitals, nursing homes, locker rooms, public restrooms, restaurants, office buildings, retail businesses, veterinary clinics and places where housekeeping is a high importance.



US100964275

BETCO FIGHT BAC - RTU

This quaternary based, anti-bacterial cleaner is an ideal disinfectant spray for use in hospitals, nursing homes, schools and hotels.



BE31112

HAND SANITIZERS

SUPPLYWAYS SANITIZER

- 70% alcohol gel sanitizer
- 4 oz per bottle
- 16 bottles per case
- Kills 99.99% of germs
- Dye and fragrance free



SWSANITIZER4OZ

PURELL® HAND SANITIZER

PURELL® Advanced Hand Sanitizer is America's #1 hand sanitizer, and kills 99.99% of most common germs that can make you sick.



GOJ960524 - 2 oz
GOJ965212 - 8 oz
GOJ365912 - 12 oz

SANITIZER IN A BAG

- 70% Isopropyl Alcohol
- Stand-up pouch w/ push button spout
- 750 mL size
- 16 pouches / Case



CL73749SM

BAC STOP 3A (E3) HAND SANITIZER

- Active Ingredient 70% Ethanol
- Complies with the CDC requirements for an effective hand sanitizer
- Effective on germs without drying out hands



ETBACSTOP3AGAL

RUBBERMAID HAND SANITIZER

Rubbermaid Commercial Products Alcohol-Based Hand Sanitizer Gel helps to prevent the spread of germs, killing 99.99% of germs on hands.



RM2133100

NOTES:

We strive to have this guide as current as possible, but there may be items that require additional information. This information could be a lead time, backorder status, item allocation, or an item is considered spot buy that once they are gone, they are gone. We are committed to doing our best to get everyone the products that you need in a timely manner based on local market conditions and need. Please contact your account manager or inside sales representative for current item availability.

WCP has implemented return restrictions on high-demand items.

Thank you - please remain healthy and responsible.



COVID19 PRODUCT GUIDE

A comprehensive product list to help re-open your business



Updated: May 22, 2020

SOAP & DISPENSERS

SUPPLYWAYS GREEN SEAL FOAMING SOAP

Pre-Lathered foam soaps are gentle enough for everyday use. For use with Supplyways manual foam soap dispenser. ADA compliant.



SW007GFS

SUPPLYWAYS ANTIBACTERIAL FOAMING SOAP

Pre-Lathered foam soaps are gentle enough for everyday use. For use with Supplyways manual foam soap dispenser. ADA compliant.



SW007AFS

SUPPLYWAYS FOAMING SOAP DISPENSER

Gray manual foam soap dispenser. Use with Supplyways foaming soap, available in dye free fragrance free or quick acting anti-microbial formula.



SW007FSD

DIAL BASICS LIQUID SOAP

Basics Liquid Hand Soap Mild soap that is gentle on skin. Dermatologist-tested and hypoallergenic formula nourishes and helps soothe dry skin.



D06028

WIPES / WIPERS & CLOTHS

CHICOPEE S.U.D.S.

This Single Use Dispensing System supports front-of-house, back-of-house, and restroom protocols. S.U.D.S.® allows you to create an impregnated wipe to exactly fit your needs. You simply add your own chemical to the wiper roll in the dispenser to create a cost effective, high performing saturated wipe. **PAIL & LID SOLD SEPARATELY FROM THE WIPES.** *Limits apply

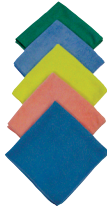


CH0720 - SANITIZING TOWEL

CH0727 - PAIL & LID

MICROFIBER CLEANING CLOTHS

These economy cloths are a lightweight option that dry quickly after use. Perfect for general-purpose cleaning of a variety of surfaces.



IMLFK500

WYPALL WIPERS

Reinforced grid that's strong for wet surface wiping and cleaning. These WypAll® L30 Wipes are a great choice to replace air laid towels.



KC05800

TISSUE, TOWELS & SEAT COVERS

SUPPLYWAYS 2-PLY BATH TISSUE

Standard roll 2-ply bath tissue. 4.4" X 3.5" Roll size.



SW007TT2

SUPPLYWAYS 2-PLY GREEN SEAL BATH TISSUE

Green Seal Certified. Standard roll 2-ply bath tissue.

4.4" X 3.5" Roll size.



SW007TT2GS

HOUSEHOLD ROLL TOWEL

Popular 2-ply perforated roll towels offer reliable performance for everyday cleaning and wiping tasks.



GP27385

SUPPLYWAYS MULTI-FOLD TOWEL

Soft absorbent economical towels. Produced in the Pacific Northwest.



SW007MFNW

SUPPLYWAYS SEAT COVERS

Very cost-effective, hygienic way to cover public seats.



SW007SC



COVID19 PRODUCT GUIDE

A comprehensive product list to help re-open your business



Updated: May 22, 2020

PERSONAL PROTECTIVE EQUIPMENT & APPAREL

FLAT EARLOOP SYTLE FACE MASK

- 50 masks per box
- Soft protection barrier
- Comfortable with good breathability
- Conforming nose piece
- Three layer design



FLATMASK

KN95 NON MEDICAL FACE MASK

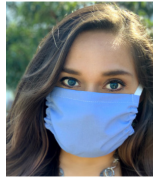
- Meets FDA N95 requirements
- Adjustable nose bridge for comfort
- 5 masks per poly pack for easy employee allocation
- 20 masks per box



KN95MASK

BIOSMART REUSEABLE FACE MASK

- Milliken BioSmart™ Fabric
- Reusable for over 75 industrial washes
- Air Permeability: 85 cfm
- Made in USA



VG5807070002FM

LATEX GLOVES

Non-sterile, form fitting, rolled beaded cuff. Ambidextrous. Manufactured to meet the the strictest quality standards.



VINYL GLOVES

100% Latex free. Smooth finish, non-sterile, form fitting, rolled beaded cuff. Ambidextrous. Composed of premium synthetic PVC.



NITRILE GLOVES

Nitrile gloves have three times the puncture resistance of comparanble latex or vinyl flovles, making these gloves an excellent choice.



FACE SHEILD

Adjustable, adjunctive PPE that is commercial-grade and reusable, protecting the face from hazards.



INFRARED THERMOMETER

MEDICAL INFRARED THERMOMETER

This highly sensitive probe measures temperature in as little as one second. Suitable for quick measurement of multiple team members or taking an individual's temperature multiple times. FDA & CE Certified. RoHS Report available.

- Rapid induction
- Accurate
- Noncontact measurement

DMIT119529



SOCIAL DISTANCE PARTITIONS

PLEXIGLASS PARTITIONS

Provides an extra layer of protection for employees and customers without the added hassle of permanent installation.



CORRUGATED PARTITIONS

Dividers are included in the design. Perforated for tear out. Option to use PVC pipe or corrugate that is included to keep the partitions apart.



SDPPARTITION
SDPSTAND



COVID19 PRODUCT GUIDE

A comprehensive product list to help re-open your business



Updated: May 22, 2020

DISTANCE & MESSAGE MATTING

MESSAGE MATS



MA3024239

Carpeted logo mats are printed with standard messages regarding safety and healthy hand washing guidelines.



MA3024242

STICK & STAND MATTING



Adhesive-backed mats designed to clearly mark floors and provide customers with a safe place to stand while waiting in lines. Adhesive backing keeps mat in place, with a low-profile design to reduce trip hazards and can be left in place during daily floor cleaning. Will perform for 3-4 months under normal use.

- Provides Clear Direction
- Stays in Place
- Hassle Free
- Won't Leave Residue
- Odor Resistant
- Slip Resistant

MA4464

SOCIAL DISTANCING RULER MAT



Accurate spacing to provide visual markers for adequate distancing as suggested by the CDC.

- Size 10' x 3'

MA3024243

USE HAND SANITIZER MESSAGE MAT



Carpeted logo mats are printed with standard messages regarding safety and healthy hand washing guidelines.

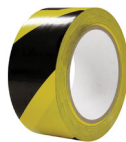
- Size 2' x 3'

MA3017627

TAPES & AISLE MARKERS

AISLE MARKING TAPE

Durable, puncture, tear and scratch resistance with quick stick to a variety of surfaces and clean easy removal.



AISLEMARKING

POLYETHYLENE TAPE

7 - 7.5 mils. Conformable, durable and hand tearable. Clean removal and repositionable. For aisle marking and social distancing.



PE35/7

COLORED SPECIALITY PAPER MASKING TAPE

Available in a variety of bright colors ideal for identification, marking social distancing areas, and color coding.



PF3



COVID19 PRODUCT GUIDE

A comprehensive product list to help re-open your business



Updated: May 22, 2020

PRE-PRINTED WALL SIGNAGE



10 x 7 POLYESTER
170563



10 x 7 PLASTIC
170207



10 x 7 PLASTIC
170180



10 x 14 PLASTIC
170563



14 X 10 ALUMINUM
170591



10 x 14 PLASTIC
170333



14 X 10 PLASTIC
170575

PRE-PRINTED FLOOR MARKINGS



14 X 18 ANTI-SKID POLYESTER
170213



17 X 17 ANTI-SKID POLYESTER
170589



17" DIAMETER ANTI-SKID
170215



17" DIAMETER ANTI-SKID POLYESTER
170517



17" DIAMETER ANTI-SKID
170336



17" ANTI-SKID POLYESTER
170581



4 X 100 TOUGHSTRIPE FLOOR TAPE
170216



COVID19 PRODUCT GUIDE

A comprehensive product list to help re-open your business



Updated: May 22, 2020

DISINFECTING & CLEANING MACHINES

KAIVAC 1750

Designed for total soil removal, No-Touch Cleaning® combines an indoor pressure washer, chemical injection and wet vacuum technologies onto a single space- efficient platform. The results are sparkling clean restrooms, kitchens, stairwells and more without ever touching a contaminated surface. No more soil, no more odor, no more complaints.

- Accurate chemical metering
- Clean outside areas, Drive-thrus, parking lots and sidewalks
- Reliable wet vacuum motor
- Industry's best squeegee blades for maximum soil removal



MOONBEAM 3

- Highly effective – Targeted UVC light provides optimal disinfection in as little as 3 minutes
- Strong coverage and penetration – Adjustable coverage with high intensity
- Material compatibility – Safe and effective for hard surfaces
- Nontoxic – No fumes or chemicals



iMOP

The maneuverability of a mop with the cleaning performance of a walk-behind floor scrubber. The i-mop XL® makes it possible to clean any surface with freedom of movement and great ease of use. No borders or boundaries. This machine isn't just designed for cleaning, it is designed for the cleaner.



NILFISK ADVANCE SC250

The battery powered Advance SC250TM micro scrubber delivers the cleaning performance you require in the compact size you need. Two solution flow settings provide the flexibility of increasing the water flow during extra tough cleaning tasks – ensuring effective cleaning and maximizing productivity.

- Compact and Maneuverable
- Fast and Effective Cleaning
- Battery Powered



TITAN FLEXSPRAY HANDHELD

FlexSpray Handheld Key Features for Disinfectant Market:

- Variable output. Can spray all water carries EPA List-N disinfectants including Betco disinfectants
- Independent adjustable air and material flow
- Atomization droplet average 30-40 microns
- Identified for spaces under 10,000 sq ft
- Great for daily touch point disinfecting



CLOROX TOTAL 360



Keep your facility healthier while saving time, money and labor. The innovative electrostatic sprayer, delivers trusted Clorox solutions to the front, back and sides of surfaces. Superior coverage for better germ protection.

WHEN USING CLOROX TOTAL 360 DISINFECTANT:

- Kills 99.9% of bacteria in 5 seconds
- 44 organism claims
- One-step disinfecting
- Eliminates odors
- Sanitizes soft surfaces
- Inhibits the growth of mold and mildew for up to 7 days

CLOROX TOTAL 360 DISINFECTANT

Eligible for use against SARS-CoV-2, the virus that causes COVID-19, based on the EPA's Emerging Viral Pathogen Policy.



CLO31650





CONTACT US TODAY

With 14 locations over 6 states we have a representative close by. Contact us to learn more about how we can help your business stay healthy and safe for customer and employees.

ANCHORAGE

2209 Spar Ave.
Anchorage, AK 99501
(907) 276-6191

KENNEWICK

620 E. Bruneau Ave.
Kennewick, WA 99336
(509) 737-0257

REDMOND

2330 SE. First St.
Redmond, OR 97756
(541) 923-0761

BOISE

3511 South TK Ave.
Boise, ID 83705
(208) 336-9092

MEDFORD

3600 Avion Drive
Medford, OR 97504
(541) 779-0400

SACRAMENTO

600 Sequoia Pacific Blvd.
Sacramento, CA 95811
(916) 447-1000

BURLINGTON

1550 Walton Dr.
Burlington, WA 98233
(253) 850-1900

MISSOULA

730 Holmes St.
Missoula, MT 59801
(406) 542-7317

SEATTLE

23200 64th Ave S.
Kent, WA 98032
(253) 850-1900

EUGENE

525 Wilson St.
Eugene, OR 97402
(541) 686-1235

PORTLAND

16705 NE. Mason St.
Portland, OR 97230
(503) 228-6561

SPOKANE

15321 E. Marietta Ave.
Spokane Valley, WA 99216
(509) 747-3133

IDAHO FALLS

130 S. Colorado
Idaho Falls, ID 83402
(208) 524-2192

REDDING

4041 Eastside Rd.
Redding, CA 96001
(530) 226-1455

